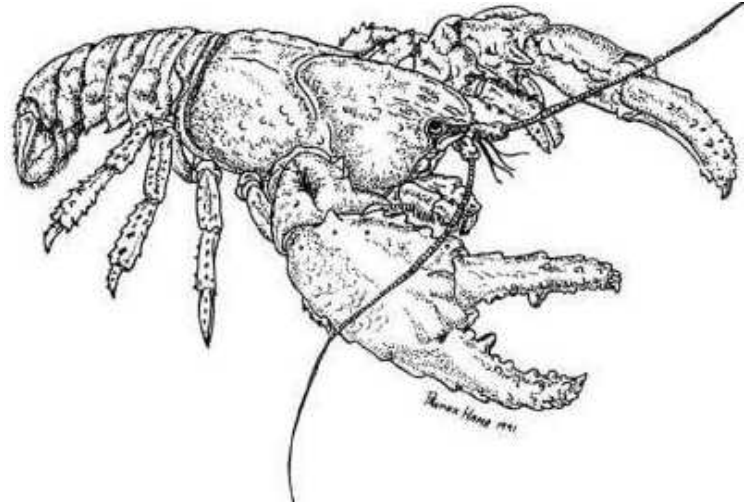


Disjunct Naturalists

WEBSITE OF THE CENTRAL NORTH FIELD NATURALISTS



Moss Leaves

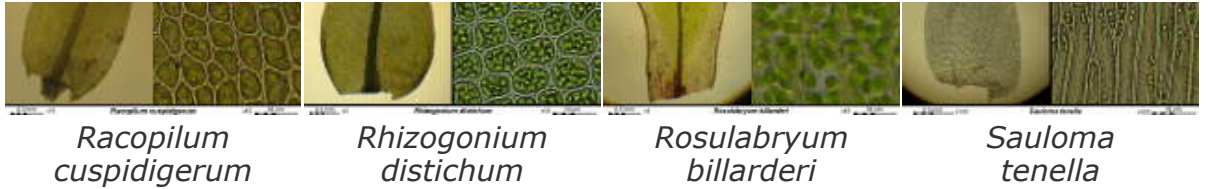
by **T. Thekathyl**

This series of moss micrographs takes its inspiration from Buck, Vitt & Malcolm's *Key to the Genera of Australian Mosses* - currently out of print.

Identification of mosses is largely by examination of leaf and capsule; cell arrangement is sufficiently distinctive to pin difficult subjects. But as the book's title suggests, this is only good to genus level.

Magnification refers to microscope objective used. We have tried to use the same scale to depict cells so they may be useful for comparison but this is not always practical. Click on the thumbnails to view larger images.





*Racopilum
cuspidigerum*

*Rhizogonium
distichum*

*Rosulabryum
billarderi*

*Sauloma
tenella*

Overflow:

- [*Atrichum androgynum*](#)
- [*Barbula calycina*](#)
- [*Calomnion complanatum*](#)
- [*Calyptrochaeta brownii*](#)
- [*Ceratodon purpureus*](#)
- [*Cyathophorum bulbosum*](#)
- [*Dicranoloma dicarpum*](#)
- [*Dicranoweisia* sp.](#)
- [*Fissidens asplenioides*](#)
- [*Funaria hygrometrica*](#)
- [*Goniobryum subbasilare*](#)
- [*Grimmia* sp.](#)
- [*Hypnodendron vitiense*](#)
- [*Leptostomum inclinans*](#)
- [*Lopidium concinnum*](#)
- [*Papillaria flavolimbata*](#)
- [*Pholia flexulosa*](#)
- [*Sphagnum cristatum*](#)
- [*Thuidium sparsum* var. *hastatum*](#)
- [*Wijkia extenuata*](#)

Reference:

W.R. Buck, D.H. Vitt & W.M. Malcolm, *Key to the Genera of Australian Mosses*, Flora of Australia Supplementary Series Number 14, Australian Biological Resources Study, Canberra.

Page URL: <https://www.disjunctnaturalists.com/articles1/mosses.htm>

[**Back to top**](#)

[**Home**](#)

[**Why 'disjunct'?**](#)

[**Membership**](#)

[**CDs & Books**](#)

[**Contact Us**](#)

[**Articles**](#)

[**Acoustic Bird Monitoring**](#)

[**Walks & events**](#)

[**Links**](#)